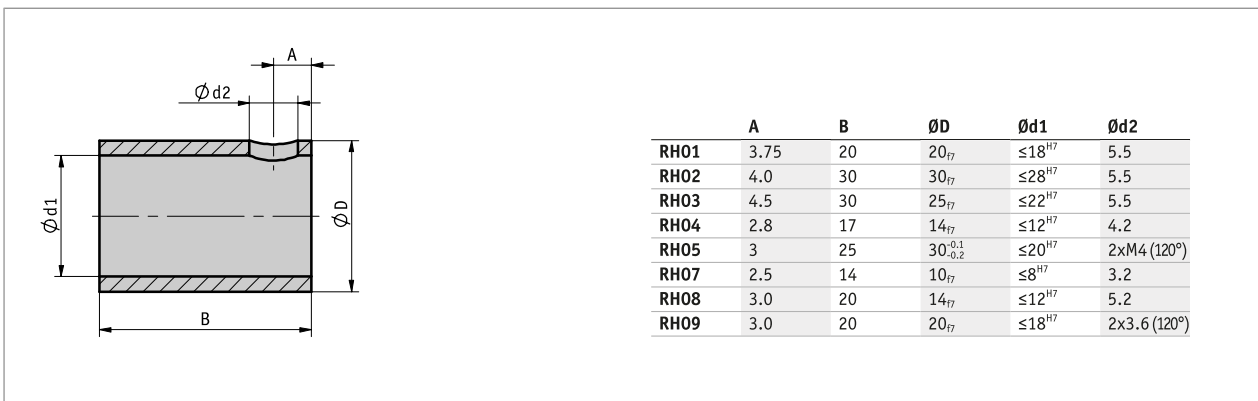
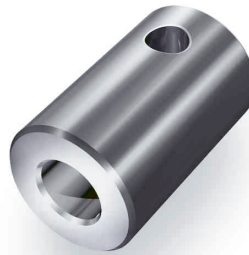


### Profile

- Easy and fast mounting
- Steel browned or stainless steel



### Mechanical data

Feature	Technical data								Additional information
Material									
	<b>RH01</b>	<b>RH02</b>	<b>RH03</b>	<b>RH04</b>	<b>RH05</b>	<b>RH07</b>	<b>RH08</b>	<b>RH09</b>	
compatible with display	DA05/1 DA08 DA09S DE10***	DA10* DA10R/1* DE10**** DE10P	DA10** DA10R/1**	DA04 DE04	KP09P	DA02 DK05	DK01 DK02	AP05 AP10*** AP20*** GS04	
odH7 steel, burnished	6, 6.35, 8, 10, 12, 12.7, 14, 15, 15.875, 16, 17, 18	10, 12, 12.7, 14, 15, 16, 18, 19.05, 20, 22, 24, 25, 25.4, 26, 28	18, 20, 22	4, 5, 6, 6.35, 8, 9.525, 10, 12	12, 14, 15, 16, 20	6, 6.35, 7, 8	5, 6, 6.35, 8, 9, 9.525, 10, 12		
odH7 stainless steel	VA8, VA9.525, VA10, VA12, VA12.7, VA14, VA15, VA15.875, VA16, VA19.05	VA12.7, VA20, VA24, VA25, VA25.4		VA6.35, VA8, VA9.525, VA10, VA12, VA12.7, VA13		VA8		VA8, VA9.525, VA10, VA12, VA12.7, VA14, VA15, VA15.875, VA16, VA18, VA19.05	

\* only with shaft WK; \*\* only with shaft WL; \*\*\* only with shaft 20; \*\*\*\* only with shaft 30  
 Note: Highlights in orange are order features.

### Order

#### ■ Ordering table

Feature	Ordering data	Spezifikation	Additional information
Mounting position	A ...	RH01, RH02, RH03, RH04, RH05, RH07, RH08, RH09	

Feature	Ordering data	Spezifikation	Additional information
internal diameter d1	B ...	see "Mechanical data" table	

### ■ Order key

RH -  -   
A B

 **Scope of delivery:**  
RH, Headless screw