

AG02

**Siemens S7-300®
PROFIBUS® Interface Module
for TIA Portal® V14 SP1**

Software Description

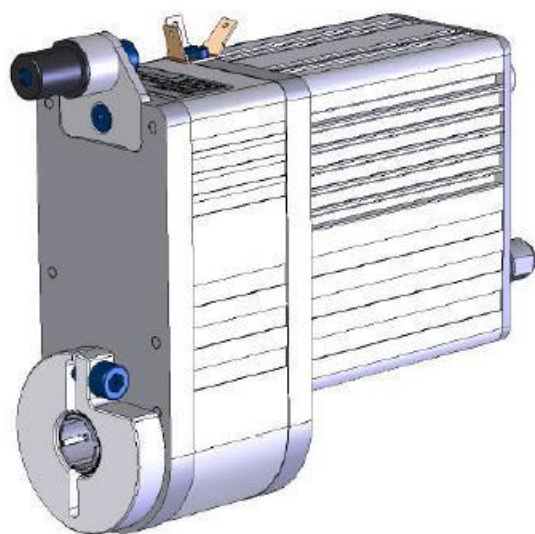


Table of contents

1	General Notes.....	3
1.1	Trademarks	3
1.2	Liability	3
1.3	Limitations	3
1.4	Requirements	3
1.5	Versions Overview	4
1.6	List of Abbreviations	4
1.7	Setup of PLC and PROFIBUS®	4
1.7.1	Create New TIA Portal® Project	4
1.7.2	Add Your PLC to the Project	5
1.7.3	Register the GSD Device Description File for AG02	6
1.7.4	Add New Module to Your Hardware Configuration	7
1.7.5	Select the AG02	8
1.7.6	Configure the PROFIBUS® Address	8
1.7.7	Configure the I / O addresses of the AG02	9
1.7.8	Configure the IP Address of the PLC in the Project	9
2	Software Configuration	10
2.1	Add Required Organization Blocks	10
2.2	Import the SIKO-library	11
2.3	Switch Programming Language of OB1 to STL	12
2.4	Function Block Call	13
2.4.1	Setup the Input and Output Addresses of the SIKO Function Block	14
2.5	Add the Watch Table "SIKO_DRV_AG02vPB_Watch" from the SIKO-library	15
2.6	Complete the Project	16
2.7	Work with the Project	16
3	Communication settings.....	17
3.1	Data Exchange	17
3.2	Parameter Access	17
3.2.1	Read Parameters	17
3.2.2	Write Parameters	17
3.2.3	Copy Parameters from Read to Write	17
3.3	Counter Value	18

1 General Notes

1.1 Trademarks

All trademarks or brand names including those protected for third parties shall unconditionally be subject to the provisions of the applicable laws governing trademarks and the proprietary rights of the registered owners. All trademarks, brand names or firm names are or may be trademarks or registered trademarks of their respective proprietors and are used only for description and unique identification. All rights not explicitly granted here are reserved.

Failure to explicitly identify trademarks used in this manual does not indicate that a name is free from rights of third parties.

Windows®, Windows® XP are trademarks of Microsoft® Corporation in the USA and other countries.

Anybus® is a registered trademark of HMS Industrial Networks AB, Sweden, USA, Germany and other countries.

SIMATIC® TIA Portal® and S7-300®, S7-400®, S7-1200®, S7-1500® are registered trademarks of Siemens AG.

PROFIBUS® and PROFINET® are registered trademarks of PROFIBUS and PROFINET International (PI).

1.2 Liability

SIKO GmbH assumes no warranty whatsoever regarding topicality, correctness, completeness or quality of the information or software products provided. All liability claims against SIKO GmbH referring to material or immaterial damages caused by using or not using the information or software provided or by using erroneous or incomplete information or software are always excluded.

1.3 Limitations

The library and its function were tested with SIMATIC® S7-300 CPU 314C-2 PN/DP.
The interface module was engineered in STL using Siemens TIA Portal® V14 SP1.

1.4 Requirements

- Basic knowledge of handling and programming Siemens systems.
- Familiarity with PROFIBUS® IO.

1.5 Versions Overview

This manual is related to

- AG02 firmware version \geq 3.10
- Library "SIKO_AGXXvFPB_TIA_V14_SP1_S7300_LIB_V100"
- Function block FB212 "SIKO_DRV_AG02vPB"

1.6 List of Abbreviations

PB	PROFIBUS®	FB	Function Block
SW	Status Word	DB	Data Block
CW	Control Word		

Table 1: Abbreviations

1.7 Setup of PLC and PROFIBUS®

1.7.1 Create New TIA Portal® Project

1. Execute the command "Create new project".
2. Enter the project name "SIKO_example_S7300".
3. Choose a project path.
4. Execute the command "Create".
5. Change to "Project view".

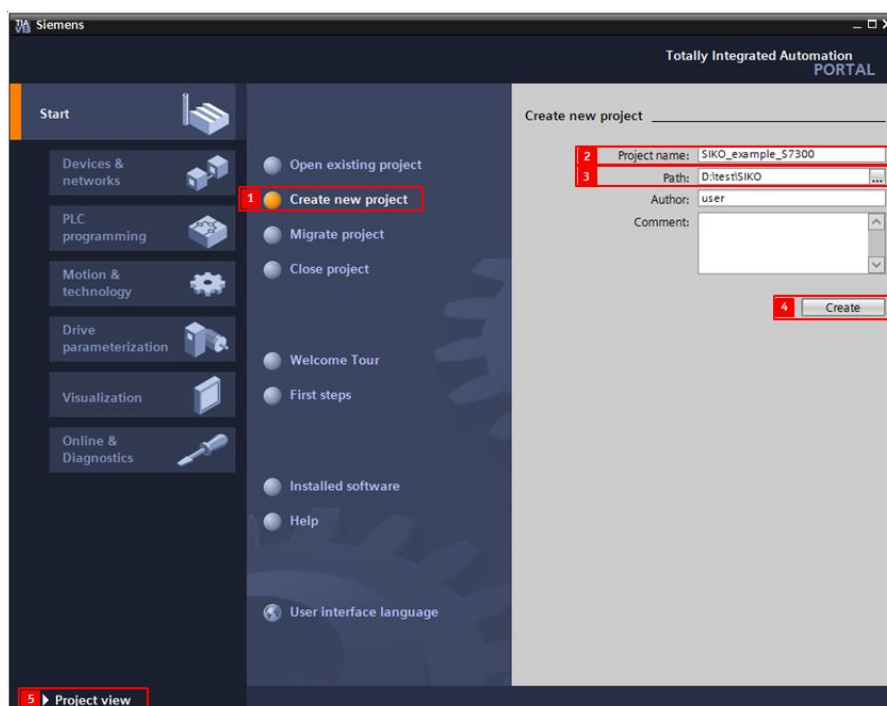


Abb. 1: TIA New Project

1.7.2 Add Your PLC to the Project

1. Navigate to the project tree in the project view and double-click on "Add new device".



Abb. 2: Add New Device

2. Assign a device name, for example "PLC_1".
3. Select "Controllers" > "SIMATIC S7-300" > "CPU" > "CPU 314C-2 PN/DP" > "6ES7 314-6EH040AB0".
4. Select "Open device view".
5. Confirm with "OK".

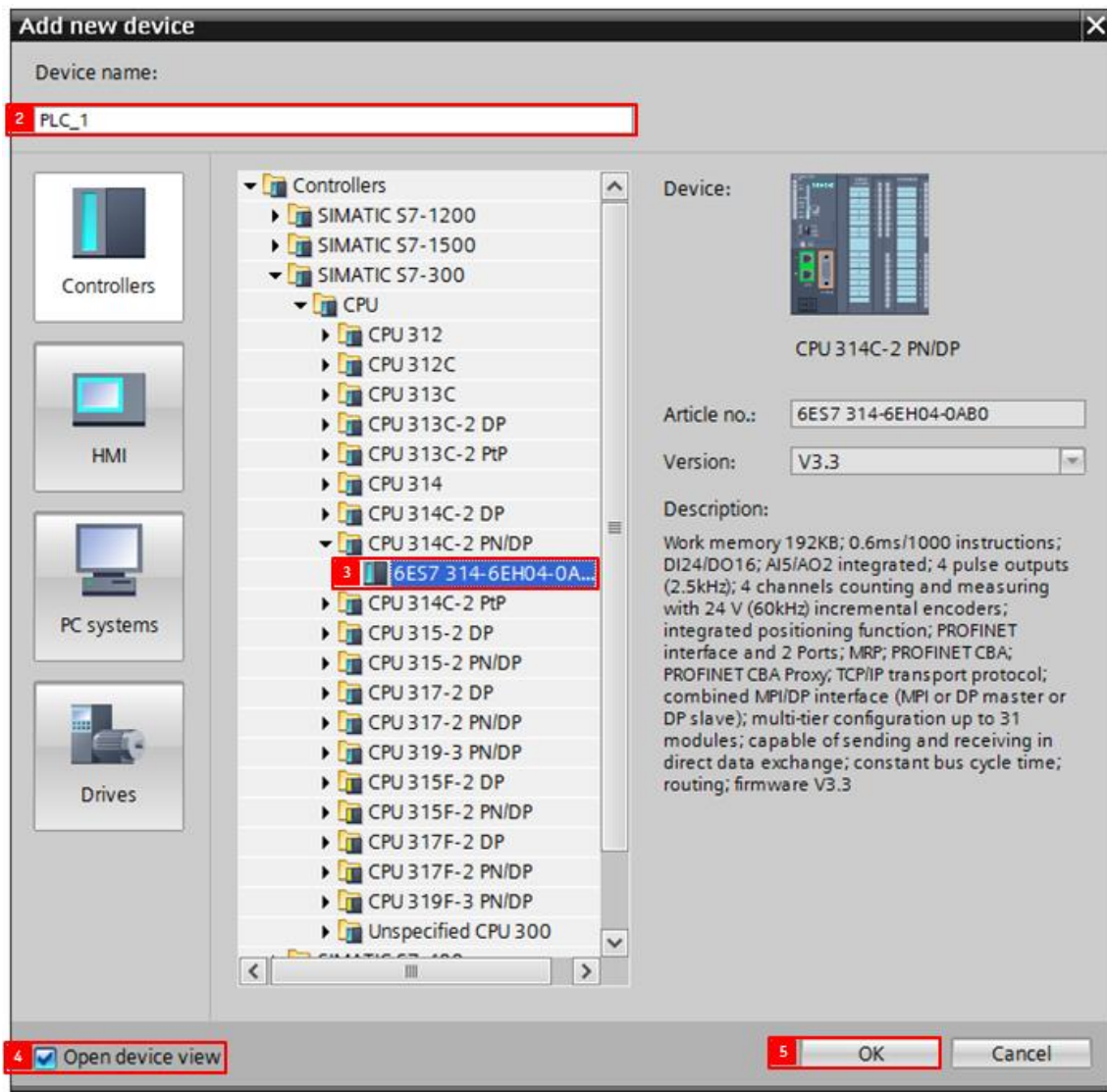


Abb. 3: Select PLC

1.7.3 Register the GSD Device Description File for AG02

1. Go to the TIA Portal® "Project view".
2. Execute the command: "Options" > "Manage general station description files (GSD)".

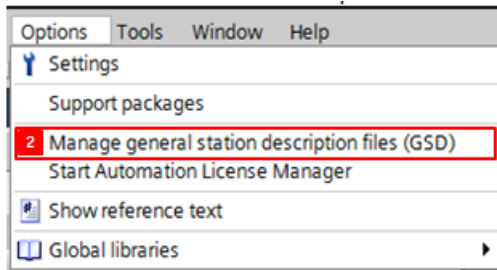


Abb. 4: Open GSD Files

3. Browse to the storage location of the GSD file.
4. Select the GSD file for Anybus Communicator.
5. Execute the command "Install".

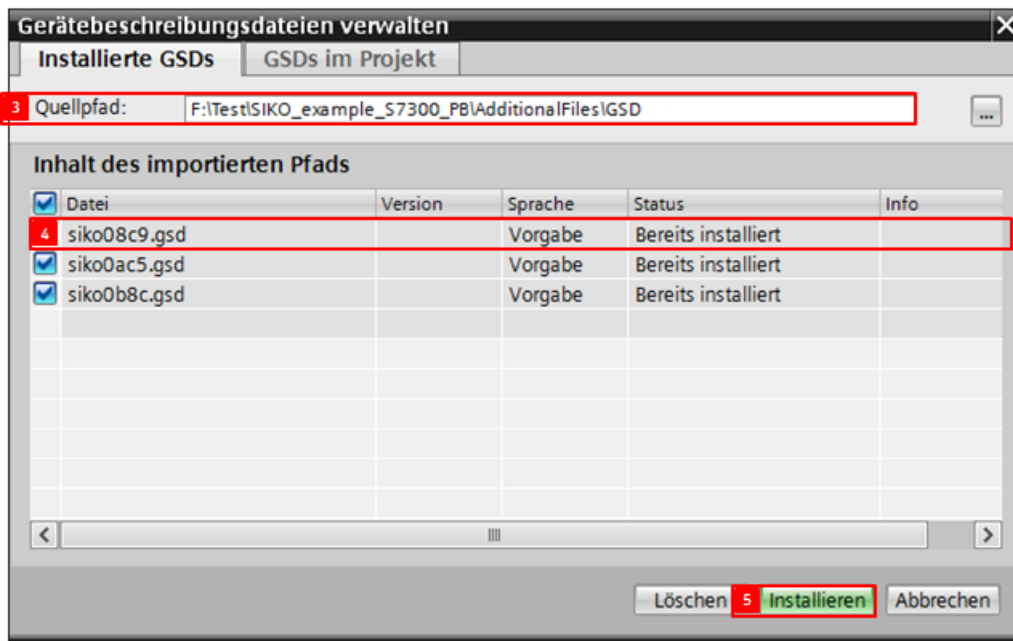


Abb. 5: Install GSD File

1.7.4 Add New Module to Your Hardware Configuration

1. Go to the TIA Portal® "Project view".
2. Double-click on "Device configuration" of your PLC.

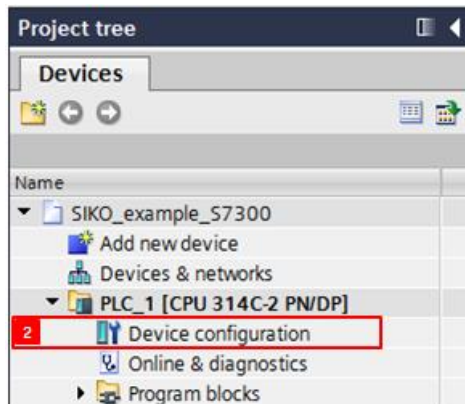


Abb. 6: Device Configuration

3. Navigate to the tab "Network view".
4. Add "RT Standard" from device "Anybus Cmmunicator PN IO > Headmodules" of the hardware catalog to the "Devices & networks window". Please check corresponding GSD version!

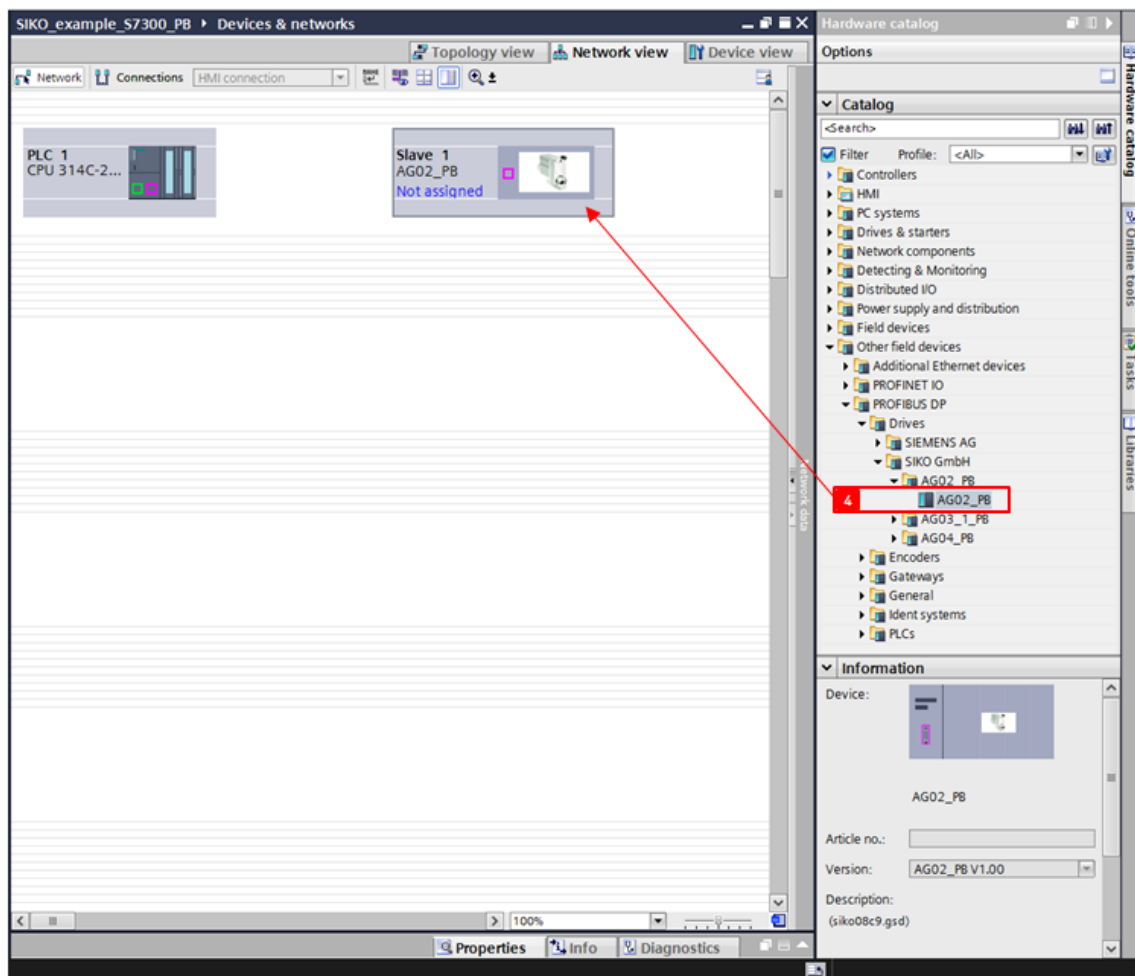


Abb. 7: Add AG02

1.7.5 Select the AG02

1. Left-click "Not assigned" inside the AG02 symbol.
2. Select master.



Abb. 8: Select Master

1.7.6 Configure the PROFIBUS® Address

1. Click on the PROFIBUS® contact point.
2. Set the PROFIBUS® address.

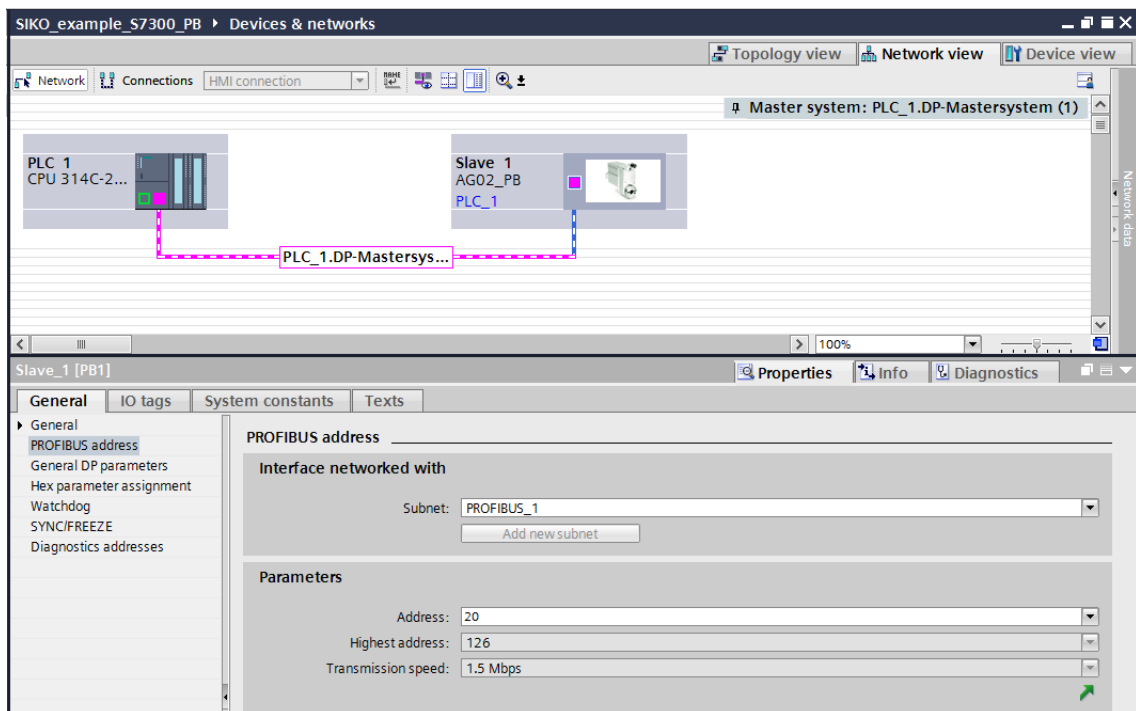


Abb. 9: Set PROFIBUS Address

1.7.7 Configure the I / O addresses of the AG02

1. Navigate to the tab "Device view" of the AG02.
2. Set the I / O addresses

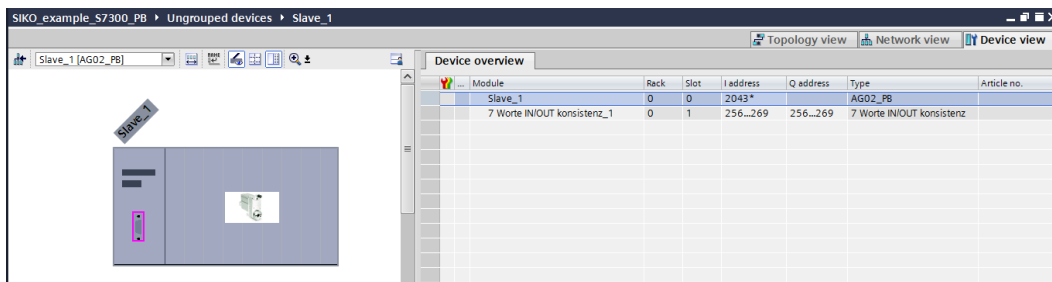


Abb. 10: I / O Addresses

1.7.8 Configure the IP Address of the PLC in the Project

NOTICE

The IP settings in this example can cause serious network problems under certain circumstances. If you are in doubt about the correct IP settings for your network, ask your system administrator for assistance.

1. Navigate to the tab "Device view" of the PLC.
2. Choose "PLC_1".
3. Double-click on CPU.
4. Left-click on "Ethernet addresses" from folder "PROFINET interface [X2]".
5. Select "Set IP address in the project".
6. Enter a valid IP address.
7. Enter a valid subnet mask.

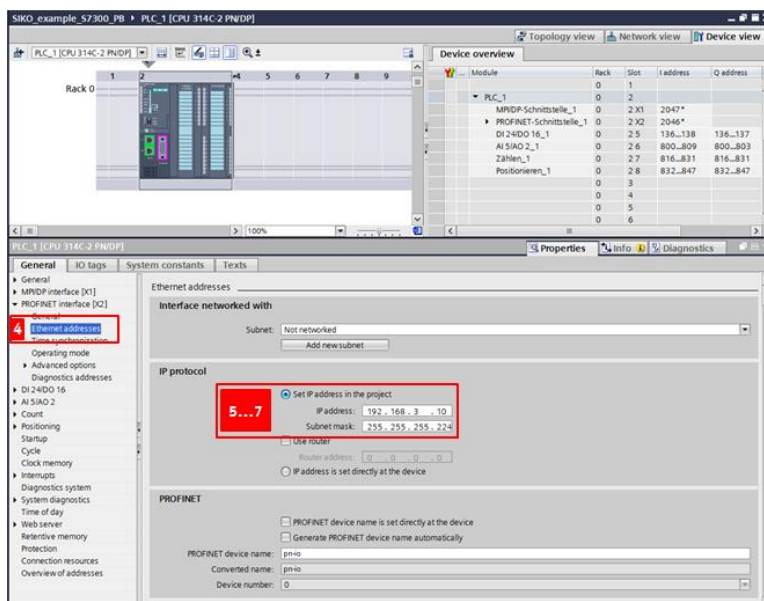


Abb. 11: IP Address and Subnet Mask

2 Software Configuration

2.1 Add Required Organisation Blocks

Add OB82, OB86 and OB122 to the folder "Program blocks".

1. Double-click on "Add new block" from folder "Program blocks".

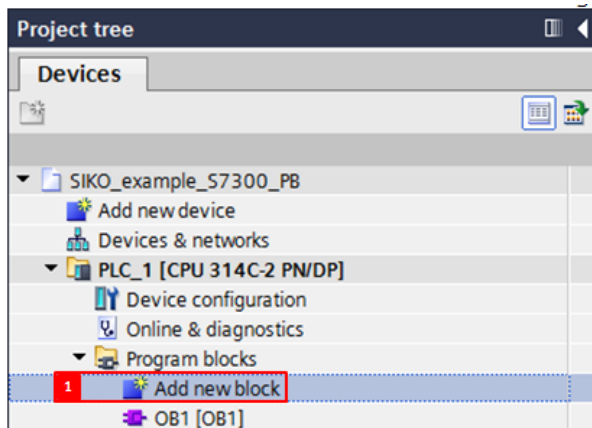


Abb. 12: Add New Block

2. Choose "OB82" from folder "Fault interrupts".
3. Choose language "STL".
4. Confirm with "OK".

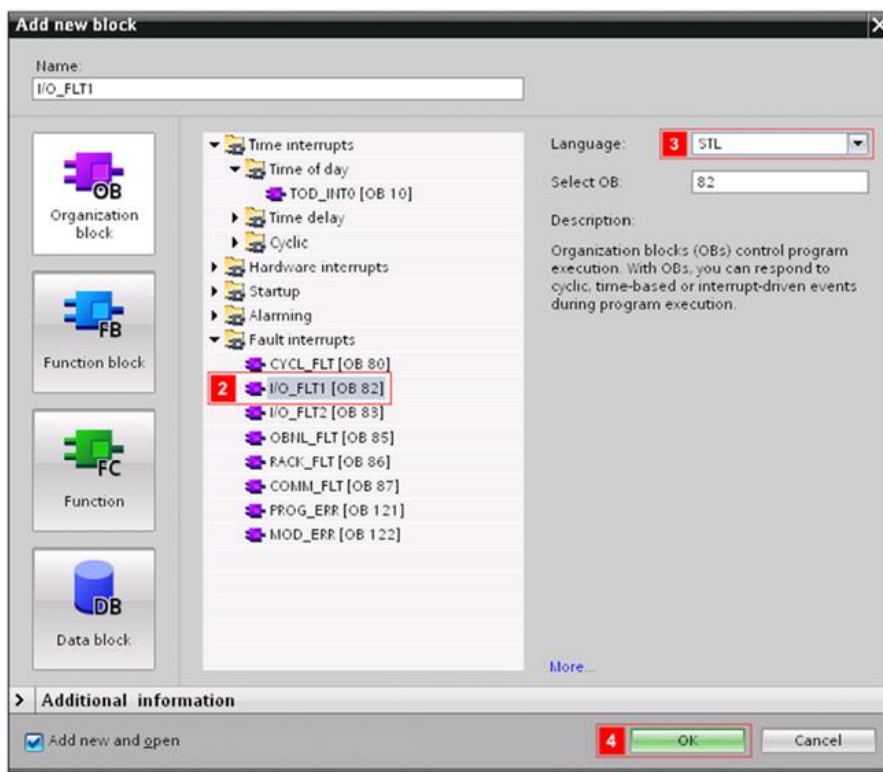


Abb. 13: Add OB82

5. Repeat steps 1 to 4 for OB86 and OB122.

2.2 Import the SIKO-library

1. Navigate to the tab "Device view".
2. Right-click in empty space inside the tab "Libraries".
3. Execute the command "Retrieve library...".

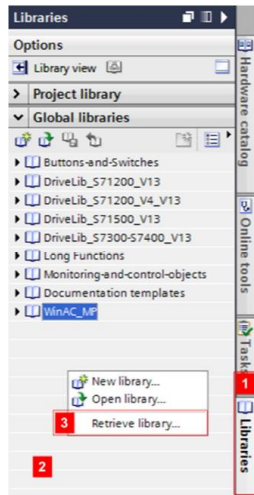


Abb. 14: Retrieve Library

4. Browse to the storage location of the SIKO-library.
5. Select the archive SIKO_AGXXvFPB_TIA_V14_SP1_S7300_LIB_V100.
6. Execute the command "Open".

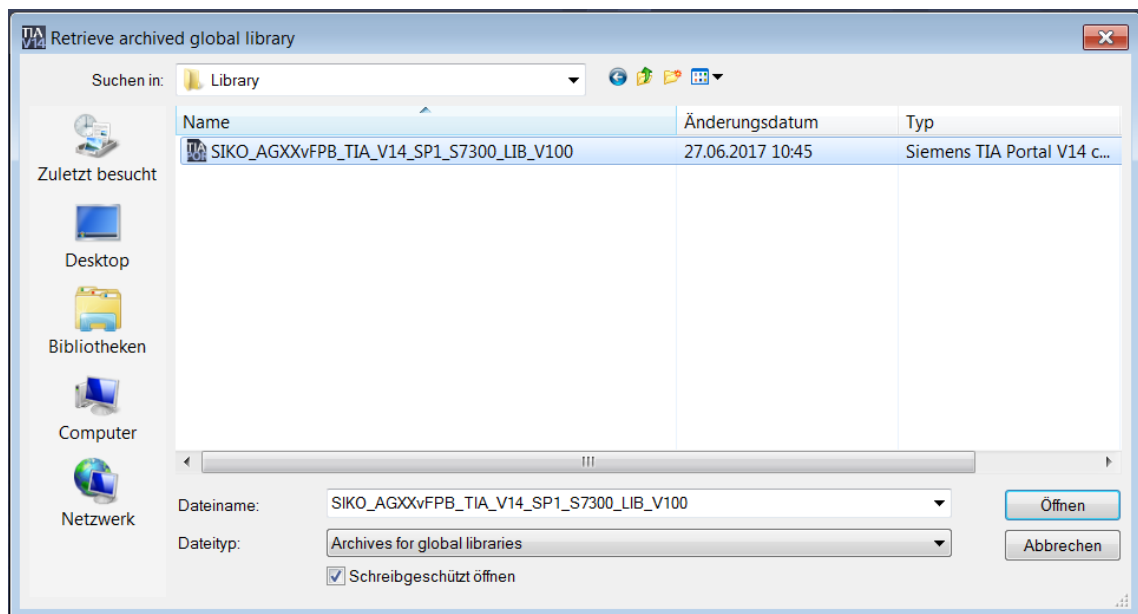


Abb. 15: Open Library

7. Choose a target directory to store the library.

- The library appears in the "Global libraries" window.

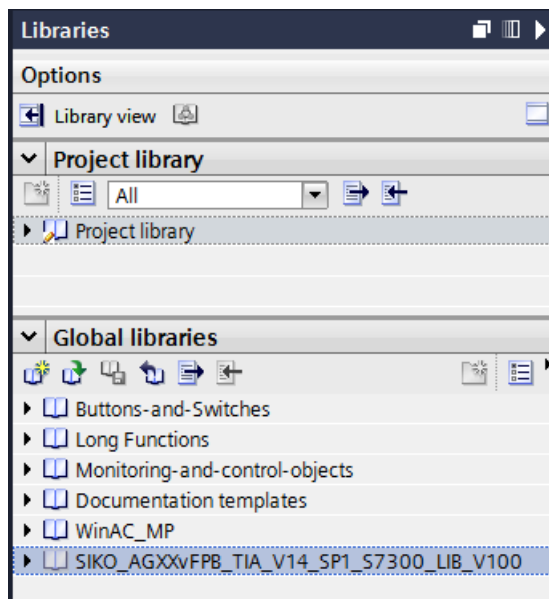


Abb. 16: Global Library

2.3 Switch Programming Language of OB1 to STL

- Navigate to the project tree.
- Go to the Program blocks folder.
- Right-click on "Main [OB1]".
- Switch programming language to STL.
- Navigate to the tab "Device view".

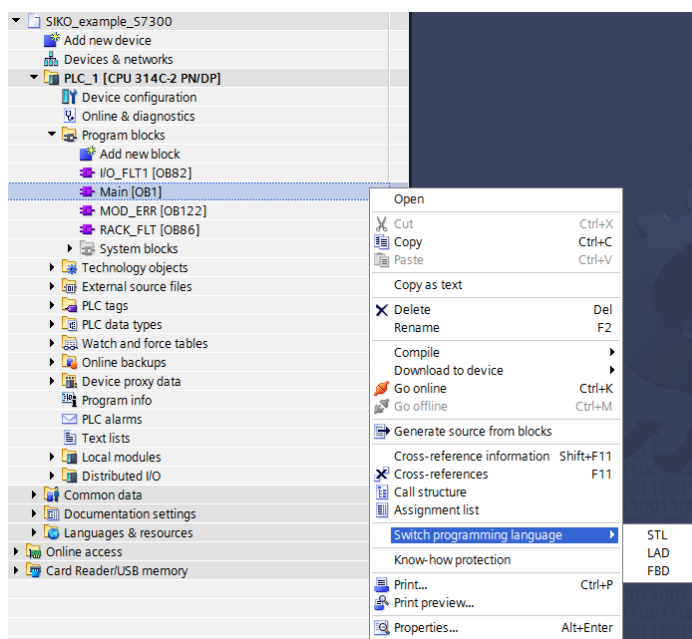


Abb. 17: Switch OB1 to STL

2.4 Function Block Call

1. Double-click on "OB1".

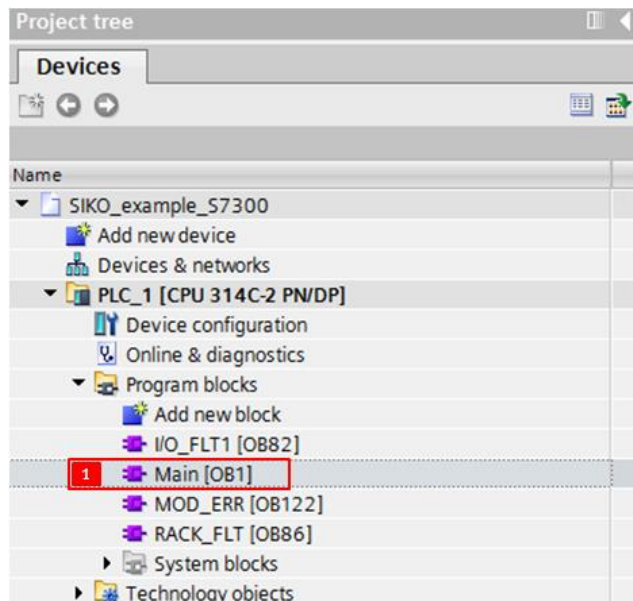


Abb. 18: Open OB1

2. The STL editor window is opened.



Abb. 19: STL Editor

3. Use drag and drop to move the function block "SIKO_DRV_AG02vPB" from the SIKO-library to the OB1 STL editor window.

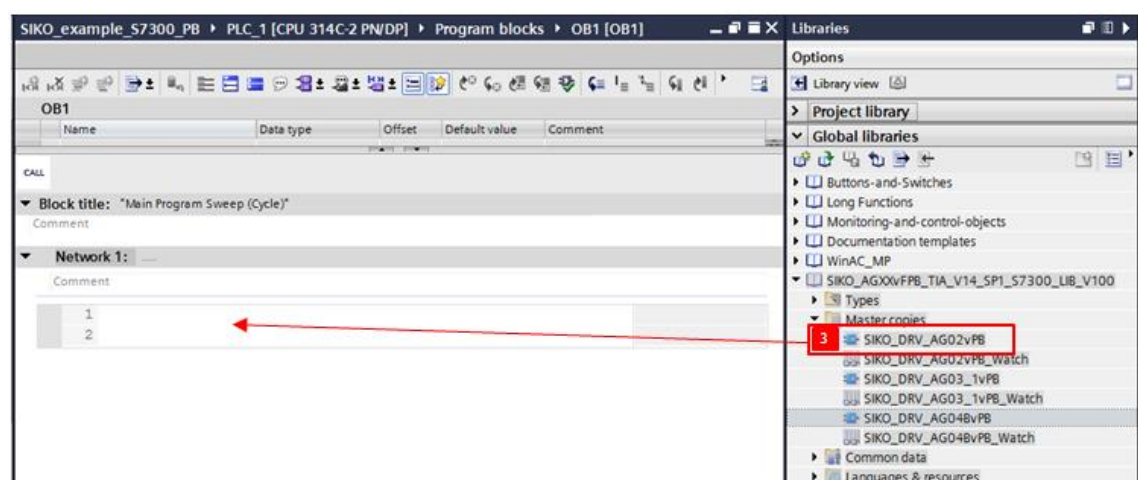


Abb. 20: Drag and Drop FB

4. Now the window "Call options" appears.
5. Select "Manual".
6. Enter "SIKO_DRV_AG02vPB_DB112" as name for the instance data block.
7. Enter Number "112".
8. Confirm with "OK".

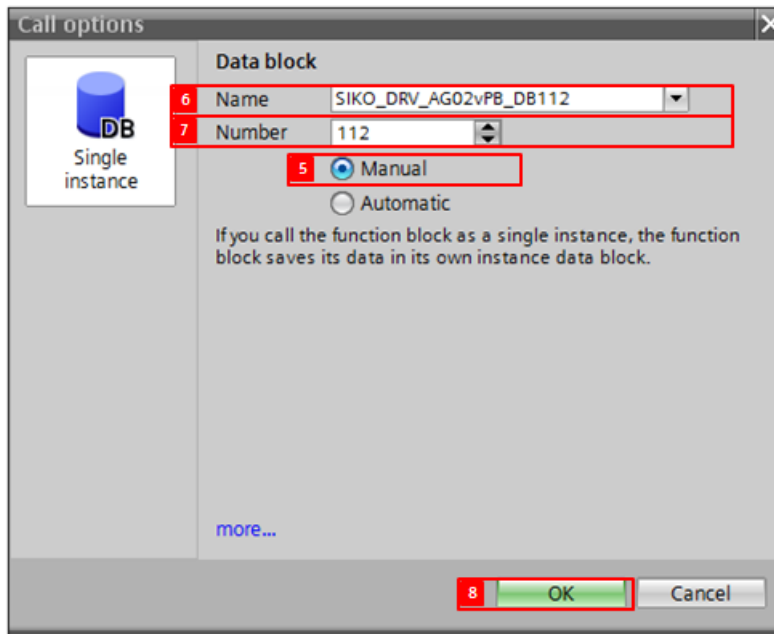


Abb. 21: Configure DB

2.4.1 Setup the Input and Output Addresses of the SIKO Function Block

To setup the input and output addresses of the function block the decimal address values from the hardware configuration have to be converted to hexadecimal values.

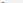
Device overview								
	...	Module	Rack	Slot	I address	Q address	Type	Article no.
		Slave_1	0	0	2043*		AG02_PB	
		7 Worte IN/OUT konsistenz_1	0	1	256...269	256...269	7 Worte IN/OUT konsistenz	

Abb. 22: Check I / O Addresses

In this example the conversion table looks like this:

Q address	256...269dec	DC_StartByteOut	W#16#100
I address	256...269dec	DC_StartByteIn	W#16#100

Table 2: Conversion Table

CALL		
▼ Block title: "Main Program Sweep (Cycle)"		
Comment		
▼ Network 1:		
Comment		
1	CALL	"SIKO_DRV_AG02vPB", "SIKO_DRV_AG02vPB_DB112" %FB112, %DB1...
2	DC_StartByteOut	:=16#100 16#100
3	DC_StartByteIn	:=16#100 16#100
4	vnSetValue	:=
5	bc00_OFF1Enable	:=

Abb. 23: Configure FB

After set up of the addresses save the settings and close the editor window.

2.5 Add the Watch Table "SIKO_DRV_AG02vPB_Watch" from the SIKO-library

1. Use drag and drop to move the watch table from the SIKO-library to the project folder "Watch and force tables".

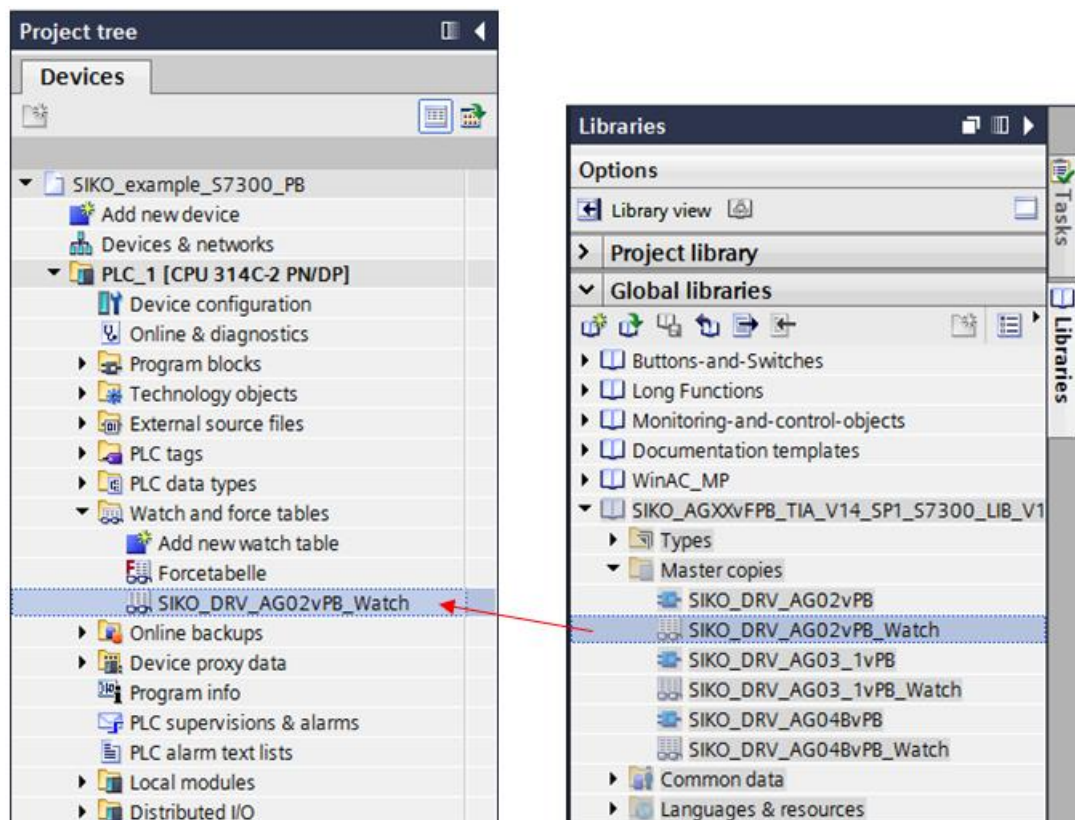


Abb. 24: Drag and Drop Watch Table

2.6 Complete the Project

1. Execute the command "Compile".
2. Execute the command "Download to device".
3. Execute the command "Save project".

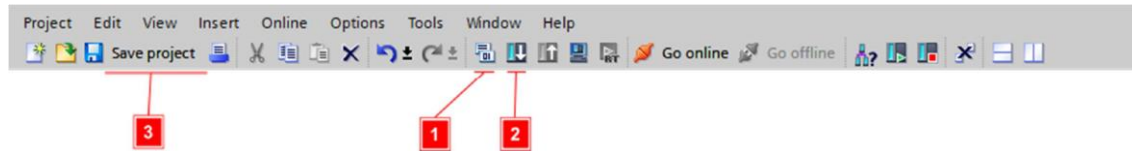


Abb. 25: Complete the Project

2.7 Work with the Project

1. Go online with your PLC.
2. Double-click on "SIKO_DRV_AGO2vPB_Watch".
3. Left-click inside the watch table window.
4. Enable the "Monitor all" option in the watch table window.
5. Now you can control the SIKO-AG02 by setting the control bits.

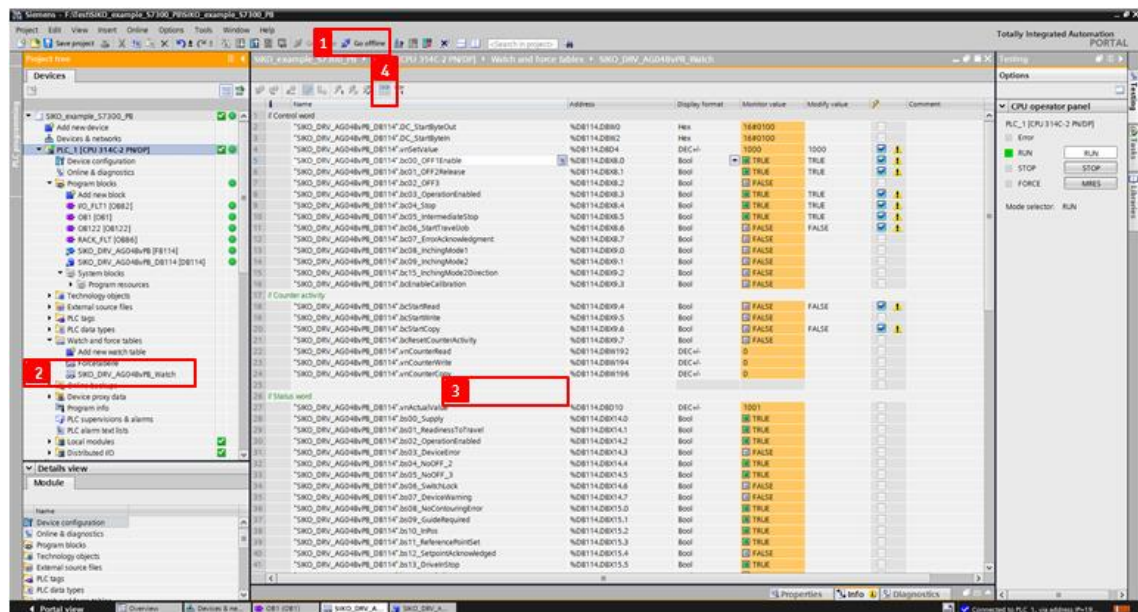


Abb. 26: Watch Table Online

3 Communication settings

3.1 Data Exchange

The FB is designed to send and receive continuously the process data, consisting out of and "nSetValue", "nActualValue", control and status word bits.

3.2 Parameter Access

The present module contains the parameter data in addition to the process data (CW/SW). Parameters that can be changed (read/write) exist in programming as actual value (_r) and as target value (_w) as well. Furthermore, it is differentiated between pure read parameters (only indicated as actual value) and pure write parameters (only indicated as target value).

A rising edge must be applied either to the "bcStartRead" or to the "bcStartWrite" input on the module described here in order to enable a read or write process of one of the variables.

3.2.1 Read Parameters

If a rising edge is applied to the "bcStartRead" input, then all parameters will be read and can be used for further programming. If counter read value is not reset to "0" the read cycle was interrupted by read failure. This indicates to a communication failure.

3.2.2 Write Parameters

If a rising edge is applied to the "bcStartWrite" input of the module, then all parameters will be transferred to the module. If counter write value is not reset to "0" the write cycle was interrupted by a write failure. This indicates to a communication failure or parameter value is beyond range of value accepted by AG02.

3.2.3 Copy Parameters from Read to Write

If a rising edge is applied to the "bcStartCopy" input of the module, then all actual values (_r) are copied to their corresponding target values (_w).

3.3 Counter Value

Count read value	Count write value	Name	Value range (dec)	Default
1		396h Profibus Address		0
2	1	3A2h Operating mode	1 ... 2	2
3 ... 12		3B1h Fault buffer		0
13		3B8h Number of faults		0
14		3C1h Hardwareversion		0
15		3C5h Softwareversion		0
16	2	3E8h Controller Parameter P	1 ... 500	250
17	3	3E9h Controller parameter I	0 ... 500	5
18	4	3EAh Controller parameter D	0 ... 500	0
19	5	3EBh a – Pos	1 ... 100	50
20	6	3ECh v – Pos	Gear 55 : 1 => 1 ... 100 62 : 1 => 1 ... 80 135 : 1 => 1 ... 35	30
21	7	3EDh a – Rot	1 ... 100	50
22	8	3EFh a – Inch	1 ... 100	50
23	9	3F0h v – Inch	Gear 55 : 1 => 1 ... 100 62 : 1 => 1 ... 80 135 : 1 => 1 ... 35	30
24	10	3F1h Pos- Window	0 ... 1000	10
25	11	3F2h ü- Numerator	1 ... 10000	1
26	12	3F3h ü – Denominator	1 ... 10000	1
27	13	3F4h Spindle pitch	0 ... 1000	0
28	14	3F5h Sense of rotation	0 ... 1	0
29	15	3F6h Pos- type	0 ... 2	0
30	16	3F8h upper limit	-9999999 ... 9999999	1000000
31	17	3F9h lower limit	-9999999 ... 9999999	-1000000
32	18	3FAh Calibration value	-999999 ... 999999	0
33	19	3FBh Delta inch	-1000000 ... 1000000	1600
34		3FCh Systemstatus word		0
35	20	3FDh Stop mode inch2	0 ... 1	0
	21	3CAh Load parameter data record		0

Table 3: Counter Value